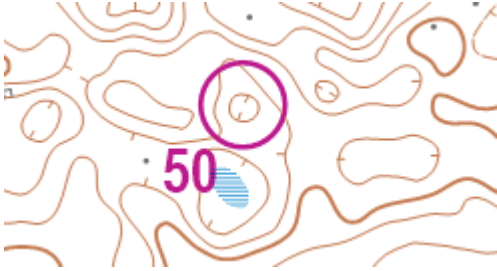


Fox-Quiz

Question 1

Which of the following control descriptions should best describe control 50?



a

	50	V			
--	----	---	--	--	--

b

	50	U			
--	----	---	--	--	--

c

	50	⊖			
--	----	---	--	--	--

Question 2

What control description should describe the control pictured below? (Photo taken facing North)



a

39		▲	0.5 3.0	
----	--	---	------------	--

b

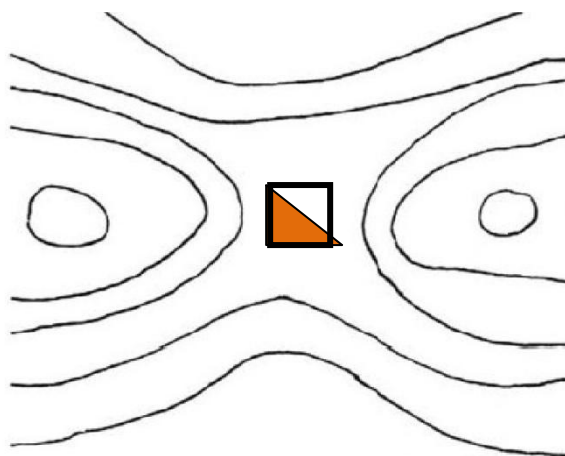
40		⚠		Q
----	--	---	--	---

c

41		▲		♀
----	--	---	--	---

Question 3

The contour only map shown below shows a control between two high points. What is the bit of land connecting the two high points called, on which the control is placed?



a. A saddle

b. A double re-entrant

c. A hill bridge

Fox-Quiz

Question 4

Look at the map below, there is a tunnel somewhere on the map, but where is it?



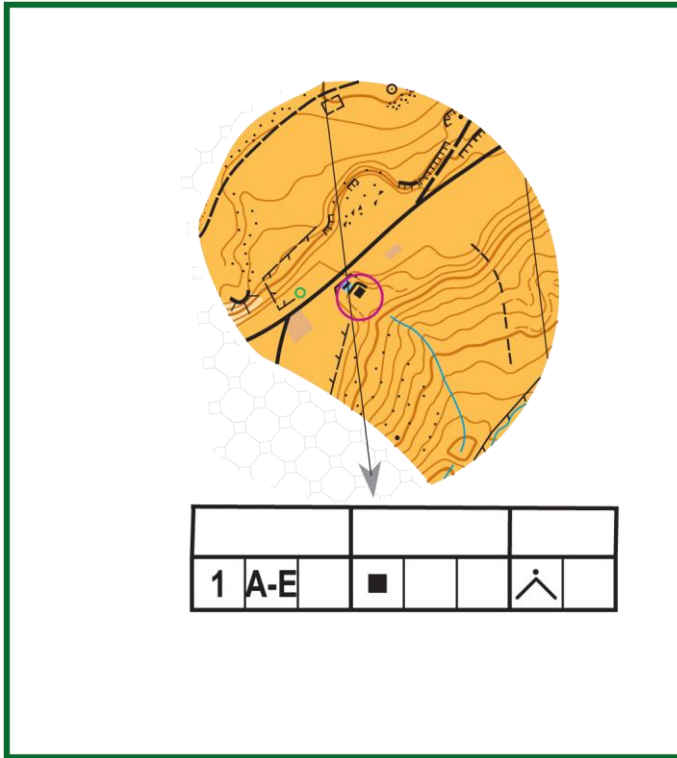
- Between the two thick black lines in the green circle
- The grey area in the blue circles
- Between the dotted lines in the red circle

Question 5

The map and picture below form part of a trail o course, using the map, decide which of the 5 flags below is in the correct position. (Hint: look at the north lines on the map.)



Fox-Quiz



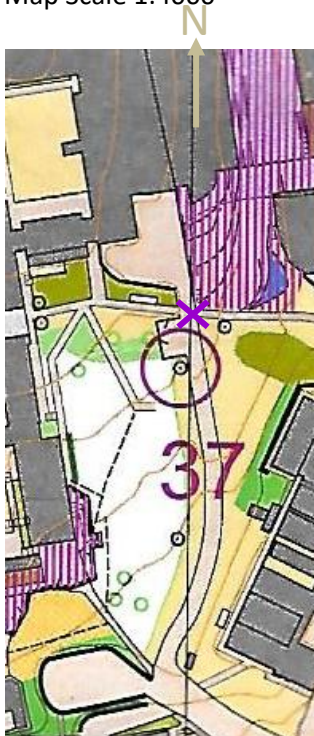
From left to right the controls are A to E.

Which control is the correct control that fits the description and the circle on the map?

- a
- b
- c
- d
- e

Question 6

Map Scale 1:4000



Which of the pictures to the right shows the location of control 37?
NB control not present; photos taken from purple X, N of control.

- a Top
- b Middle
- c Lower



Fox-Quiz

Question 7

The forest shown in the map below is which of the following?



- a Dense woodland but with some strips of land runnable.
- b Intersected by forest rides.
- c Runnable in one direction.

Question 8

Here is a control from an orienteering course, and the control descriptions, ignoring the control codes, which one of the control descriptions accurately and fully describes control 8?



a	8	58	V	▲▲		
b	8	59	U			
c	8	60	V	/	—	•

Question 9

The distance between two controls is 850m, the map used has a scale of 1:5000, what is the distance between the two controls on the map?

- a 16.5cm
- b 17cm
- c 18.5cm

Answers...

Will be revealed next week!